



**Electrolux**  
PROFESSIONAL

**Modular Cooking Range Line  
thermaline 80 - 800 mm Electric  
Warming Cabinet with 2 doors, GN  
conform, 1 Side (H2) - H=450**

ITEM # \_\_\_\_\_

MODEL # \_\_\_\_\_

NAME # \_\_\_\_\_

SIS # \_\_\_\_\_

AIA # \_\_\_\_\_



**588307 (MA4HCAHOAO)**

Electric warming cabinet,  
with 2 doors, one-side  
operated, GN - H2

### Short Form Specification

**Item No.** \_\_\_\_\_

800 mm wide warming cabinet with 2 doors, constructed according to DIN 18860\_2 with 70 mm recessed plinth. Internal frame for heavy duty sturdiness in 2 mm and 3 mm in 1.4301 (AISI 304). 2 mm top in 1.4301 (AISI 304). Flat surface construction, easily cleanable. THERMODUL connection system enables seamless worktop when units are connected and avoids soil penetrating. Temperature in the cabinet can be set through thermostat, up to a maximum of 110 °C. Cabinet storage space accepts GN 1/1 containers.

IPX5 water resistant certification.

Configuration: One-side operated freestanding base, hygienic class H2.

### Main Features

- All major components may be easily accessed from the front.
- THERMODUL connection system creates a seamless work top when units are connected to each other thus avoiding soil penetrating vital components and facilitating the removal of units in case of replacement or service.
- Unit constructed according to DIN 18860\_2 with 70 mm recessed plinth.
- Temperature in the cupboard can be set through a thermostat to suit different requirements. The maximum temperature is 110° C.
- Unit can be installed below modular top appliances, designed to keep plates warm.

### Construction

- IPX5 water resistance certification.
- 2 mm top in 1.4301 (AISI 304).
- Flat surface construction with minimal hidden areas to easily clean all surfaces
- Storage space in the base of the appliance accepts GN1/1 containers.
- Internal frame for heavy duty sturdiness in stainless steel.

### Optional Accessories

- Stainless steel side panel, 800x700mm, freestanding PNC 912509 ☐
- Stainless steel front kicking strip, 800mm width PNC 912634 ☐
- Stainless steel side kicking strip left and right, freestanding, 800mm width PNC 912655 ☐
- Stainless steel side kicking strip left and right, wall mounted, 800mm width PNC 912658 ☐
- Stainless steel side kicking strip left and right, back-to-back, 1600mm width PNC 912661 ☐
- Stainless steel plinth, against wall, 800mm width PNC 912844 ☐
- Stainless steel plinth, freestanding, 800mm width PNC 912863 ☐
- Stainless steel panel, 800x700mm, against wall, left side PNC 913093 ☐
- Stainless steel panel, 800x700mm, flush-fitting, against wall, right side PNC 913097 ☐
- Back panel, 800x450mm, for bases and units, one-side operated PNC 913167 ☐
- - NOT TRANSLATED - PNC 913214 ☐
- - NOT TRANSLATED - PNC 913215 ☐
- - NOT TRANSLATED - PNC 913234 ☐

**APPROVAL:** \_\_\_\_\_



Experience the Excellence  
[www.electroluxprofessional.com](http://www.electroluxprofessional.com)  
ELUX\_EMAIL



**Electrolux**  
PROFESSIONAL

Modular Cooking Range Line  
thermaline 80 - 800 mm Electric Warming  
Cabinet with 2 doors, GN conform, 1 Side (H2) -  
H=450

• - NOT TRANSLATED -	PNC 913244	<input type="checkbox"/>
• - NOT TRANSLATED -	PNC 913258	<input type="checkbox"/>
• - NOT TRANSLATED -	PNC 913263	<input type="checkbox"/>
• - NOT TRANSLATED -	PNC 913265	<input type="checkbox"/>
• - NOT TRANSLATED -	PNC 913271	<input type="checkbox"/>
• - NOT TRANSLATED -	PNC 913272	<input type="checkbox"/>
• - NOT TRANSLATED -	PNC 913281	<input type="checkbox"/>
• - NOT TRANSLATED -	PNC 913668	<input type="checkbox"/>
• - NOT TRANSLATED -	PNC 913684	<input type="checkbox"/>



Modular Cooking Range Line  
thermaline 80 - 800 mm Electric Warming Cabinet with 2 doors, GN  
conform, 1 Side (H2) - H=450  
The company reserves the right to make modifications to the products  
without prior notice. All information correct at time of printing.

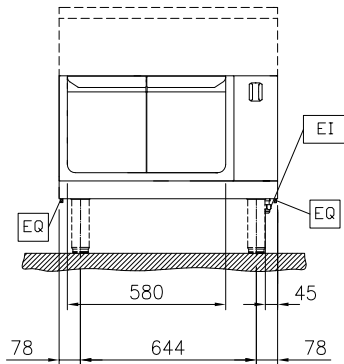
2025.12.18



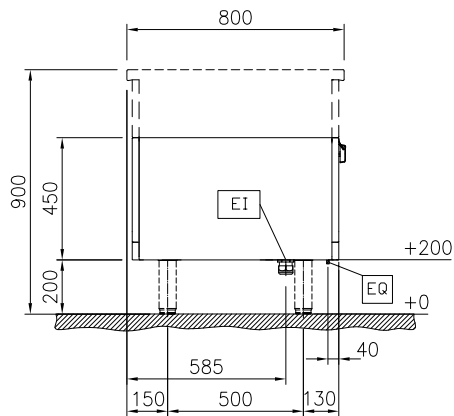
**Electrolux**  
PROFESSIONAL

**Modular Cooking Range Line**  
**thermaline 80 - 800 mm Electric Warming**  
**Cabinet with 2 doors, GN conform, 1 Side (H2) -**  
**H=450**

Front

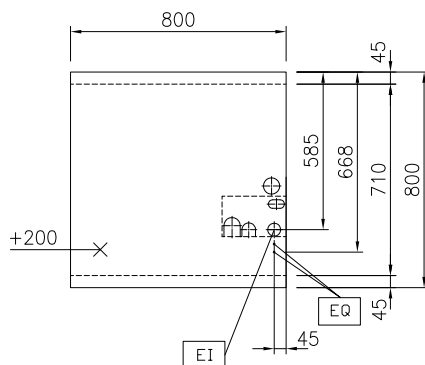


Side



EI = Electrical inlet (power)

Top



**Key Information:**

**External dimensions, Width:**

**588307 (MA4HCAHOAO)** 800 mm

**External dimensions, Depth:** 800 mm

**External dimensions, Height:** 450 mm

**Cupboard Cavity Dimensions (width):** 580 mm

**Cupboard Cavity Dimensions (height):** 330 mm

**Cupboard Cavity Dimensions (depth):** 715 mm

**Cabinet temperature range:** 30-110 °C

**Net weight:** 28 kg

**Sustainability**

**Current consumption:** 5 Amps



**Modular Cooking Range Line**  
**thermaline 80 - 800 mm Electric Warming Cabinet with 2 doors, GN**  
**conform, 1 Side (H2) - H=450**  
The company reserves the right to make modifications to the products  
without prior notice. All information correct at time of printing.

2025.12.18